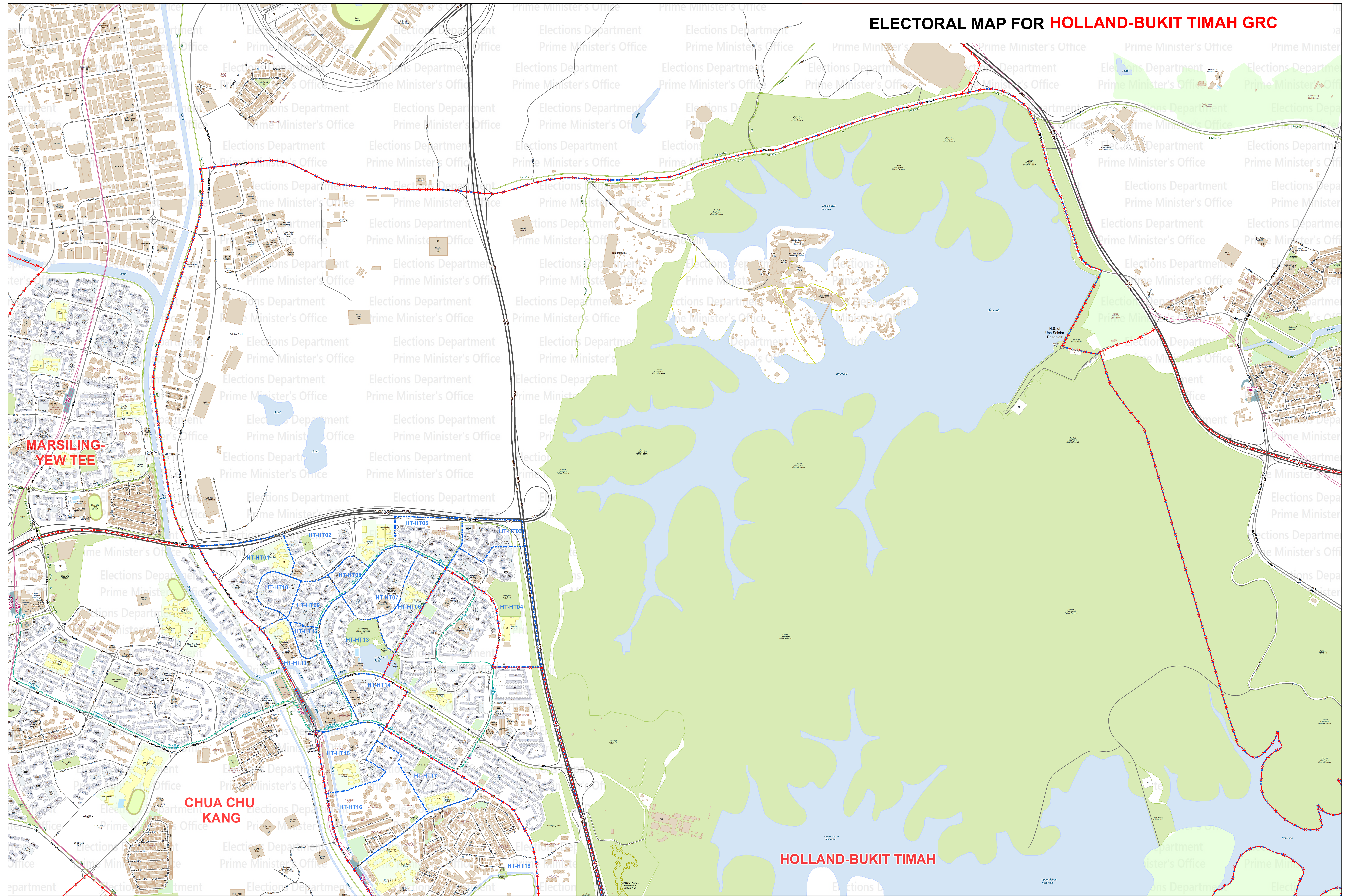


ELECTORAL MAP FOR HOLLAND-BUKIT TIMAH GRC



Legend

- HDB Building
- Non-HDB Building
- MRT/LRT Station

ELECTORAL MAP FOR HOLLAND-BUKIT TIMAH GRC

ELECTORAL DIVISION —X—X—X—X—

POLLING DISTRICT

SCALE 1:7,500

MAP 1 OF 4

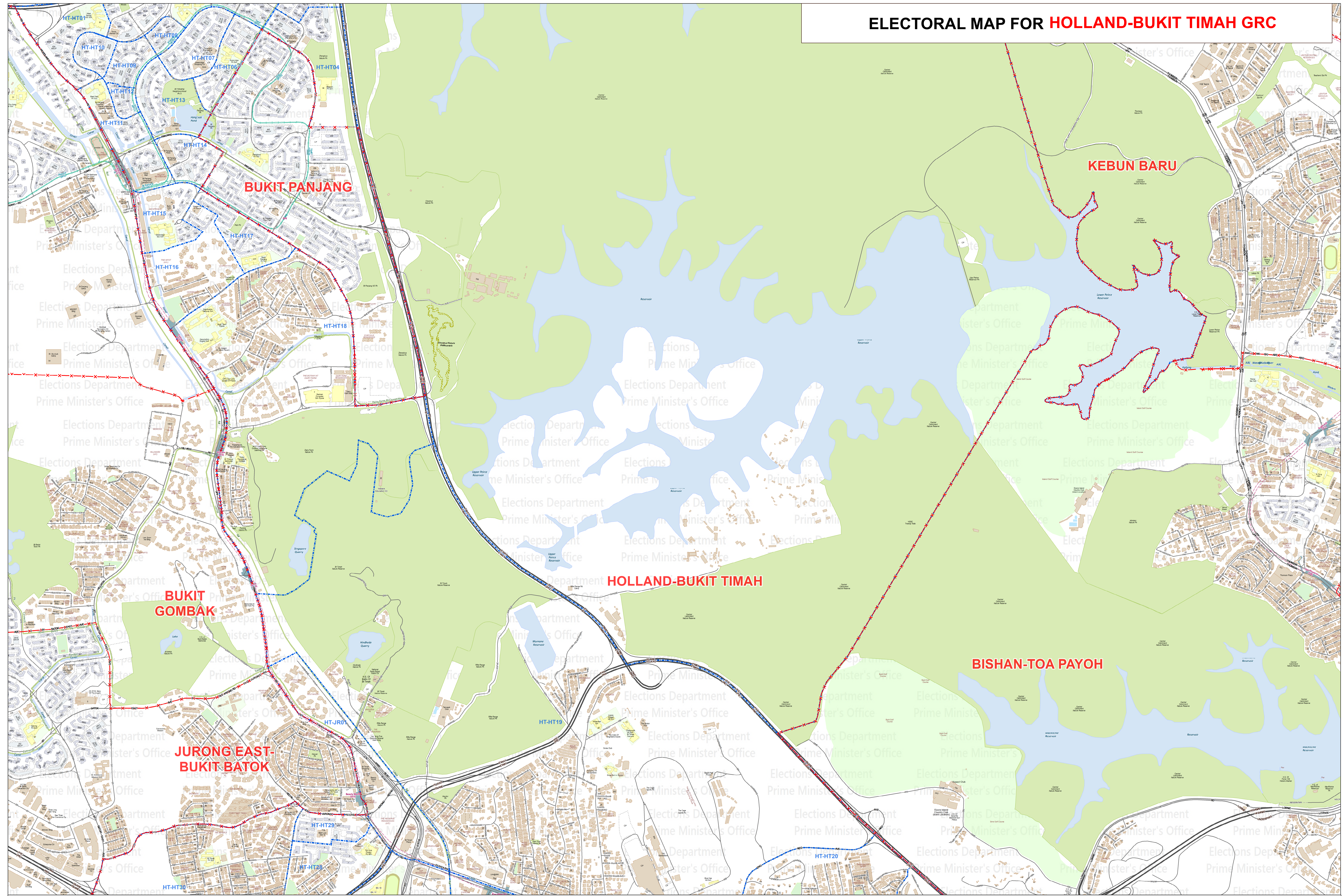
Electoral division and polling district boundaries do not represent the extent of Singapore's territorial waters.
Background Data: Updated as at 3 March 2025.
Electoral and Polling District Boundaries: Updated as at 13 March 2025.

ALL RIGHTS RESERVED

SLA

No map may be produced wholly or in part without the written permission of the data supplier.
For more information please contact:
Electoral Division Mapping
Candidate System & Candidate Coordination & Data
Singapore Land Authority
11 Marina Road, Singapore 018981
Land 1, National House
Singapore 07907

ELECTORAL MAP FOR HOLLAND-BUKIT TIMAH GRC



Legend

- HDB Building
- Non-HDB Building
- MRT/LRT Station

ELECTORAL MAP FOR HOLLAND-BUKIT TIMAH GRC

ELECTORAL DIVISION —X—X—X—X—

POLLING DISTRICT

SCALE 1:7,500

MAP 2 OF 4

Electoral division and polling district boundaries do not represent the extent of Singapore's territorial waters.

Reprint Date : Updated as at 3 March 2025

Electoral and Polling District Boundaries : Updated as at 13 March 2025

ALL RIGHTS RESERVED

SLA

This map may be produced wholly or in part without the written permission of the data supplier.

For more information please contact:

Chief Executive Officer

Communications & Customer Care

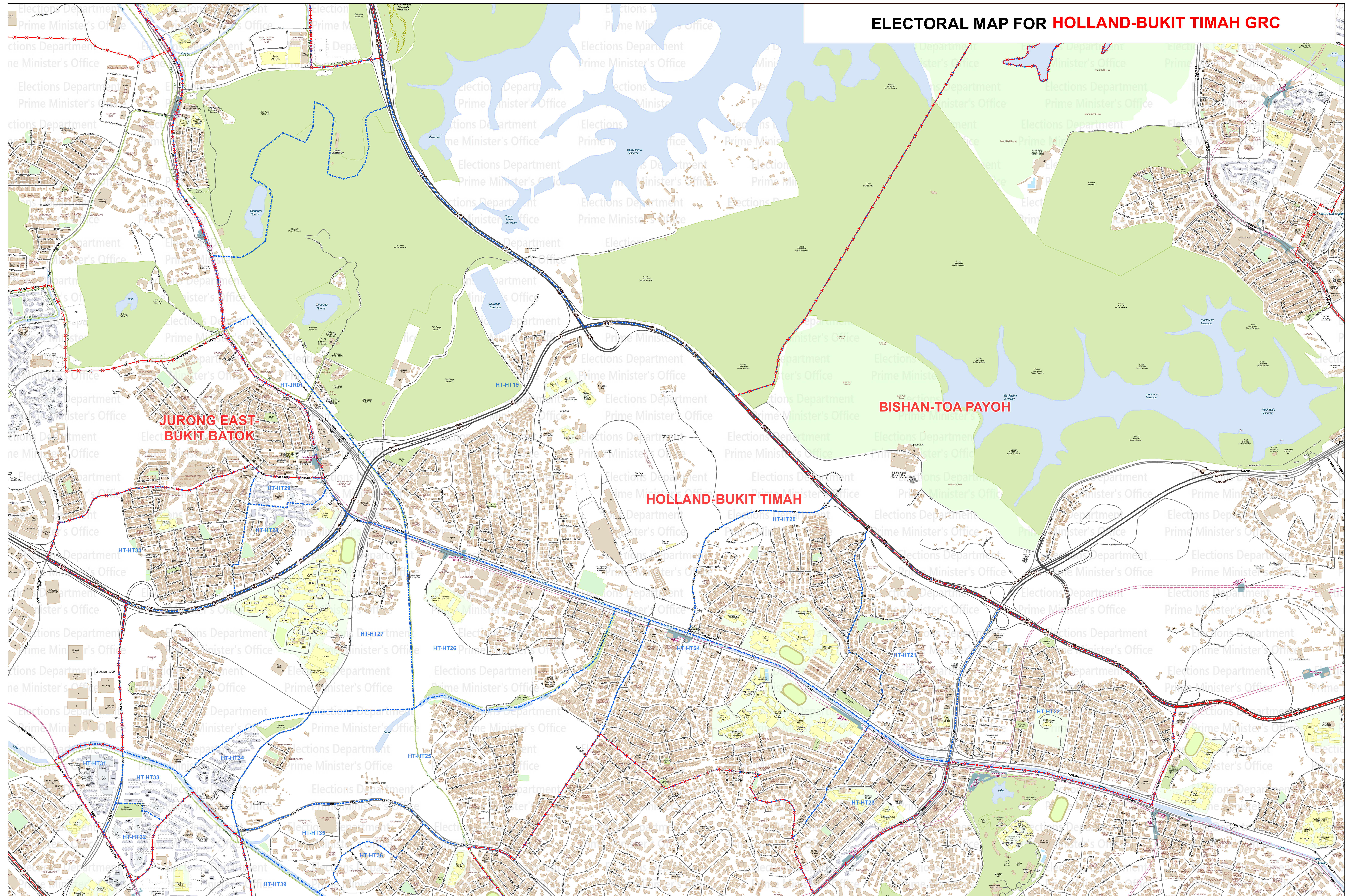
Singapore Land Authority

100 Robinson Road, #05-01

Level 5, Robinson Road

Singapore 068976

ELECTORAL MAP FOR HOLLAND-BUKIT TIMAH GRC



**JURONG EAST-
BUKIT BATOK**

BISHAN-TOA PAYOH

HOLLAND-BUKIT TIMAH

ELECTORAL MAP FOR HOLLAND-BUKIT TIMAH GRC

ELECTORAL DIVISION -X-X-X-X-X
POLLING DISTRICT - - - - -
SCALE 1:7 500

MAP 3 OF 4
Electoral division and polling district boundaries do not represent the extent of Singapore's territorial waters.
Basemap Data : Updated as at 3 March 2025
Electoral and Polling District Boundaries : Updated as at 11 March 2025

SLA
SINGAPORE LAND AUTHORITY

RIGHTS RESERVED

Map may be produced wholly or in part without the permission of the data supplier(s).
For more information please contact:
Senior Geospatial Manager,
Geospatial Systems & Solutions/GeoSpatial & Data
Singapore Land Authority
1 Newton Road, Tascapay and Business Service Centre
Level 1, Raffles House
Singapore 119117

ELECTORAL MAP FOR HOLLAND-BUKIT TIMAH GRC

JURONG EAST-
BUKIT BATOK

BISHAN-TOA PAYOH

HOLLAND-BUKIT TIMAH

TANJONG PAGAR

Legend

- HDB Building
- Non-HDB Building
- MRT/LRT Station

ELECTORAL MAP FOR HOLLAND-BUKIT TIMAH GRC

ELECTORAL DIVISION —X—X—X—X—

POLLING DISTRICT

SCALE 1:7,500

MAP 4 OF 4

Electoral division and polling district boundaries do not represent the extent of Singapore's territorial waters.
Background Data: Updated as at 3 March 2025.
Electoral and Polling District Boundaries: Updated as at 13 March 2025.

ALL RIGHTS RESERVED

SLA

No map may be produced wholly or in part without the written permission of the SLA.
For more information please contact:
Chief Executive Officer
Candidate System & Election Coordination & Data
Singapore Land Authority
Level 1, Financial Hub
Singapore 07001